

# CHALLENGE OF THE MONTH: "GINGERBREAD MAN"

TEACHER  
INSTRUCTIONS

## TEACHER PLANNING

Approximate Time: 40-60 minutes + Extra if time is available and students are engaged.

### Supplies:

- Cardstock (K-2) or Cardboard (3-5)  
\*\*Regular printer paper will NOT work.  
The paper must be a form of cardstock.
- Markers
- Tape
- Scissors
- Extra craft supplies (colored tape, glitter, colored or patterned paper)
- OPTIONAL: Gingerbread man printed template

\*\*Monthly challenges are designed for students ages K-5. Younger students may need support to complete.

## QUESTIONS TO INITIATE BRAINSTORMING

How can we make a piece of paper or cardboard stand up?

-Usually with a fold or brace from paper or tape

What might we include on a gingerbread person?

-Face, clothes, holiday details, maybe hair



"GINGERBREAD MAN"

# PROJECT CHALLENGE OF THE MONTH!

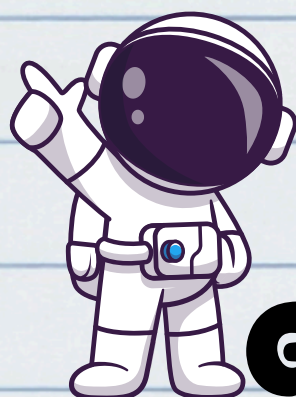
FOR KIDS

Can you create a gingerbread man  
or woman that can stand up?

Maybe create a gingerbread family?

## Our Process:

- Brainstorm
- Create
- Reflect
- Re-Create

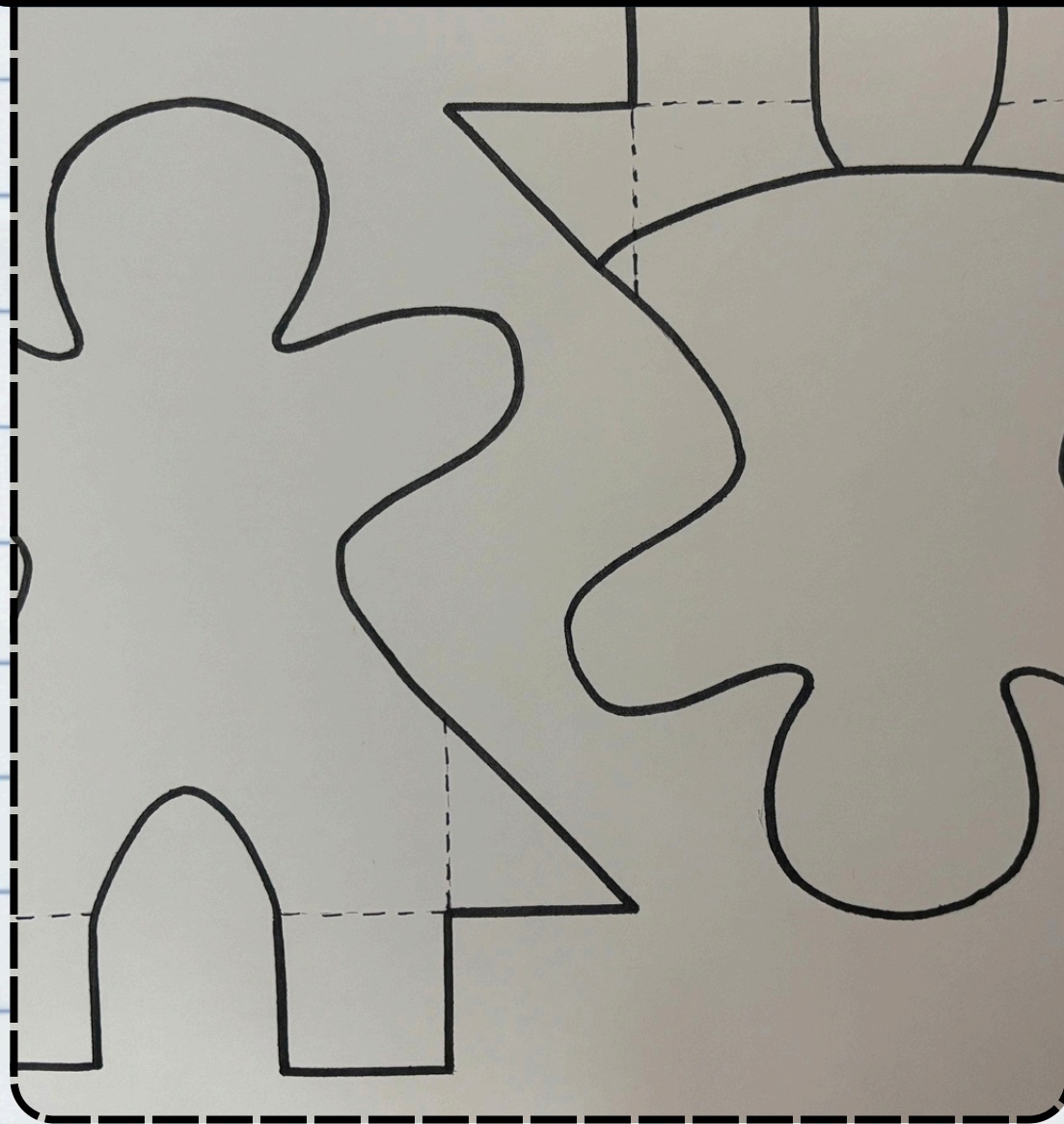


**GENSTEM**

HANDS ON STEAM FOR K-5



## CHALLENGE BROKEN DOWN INTO STEPS:



First, create your gingerbread person's outline. You can print the provided template or make your own.



Students can decorate the gingerbread person with markers, paint, colored pencil, colored paper, or whatever else is easily available. It is OK to go out of the lines because the person will be cut out later.

## TEACHER INSTRUCTIONS



If creating the gingerbread person from cardboard, you can print the template to trace or draw your own.

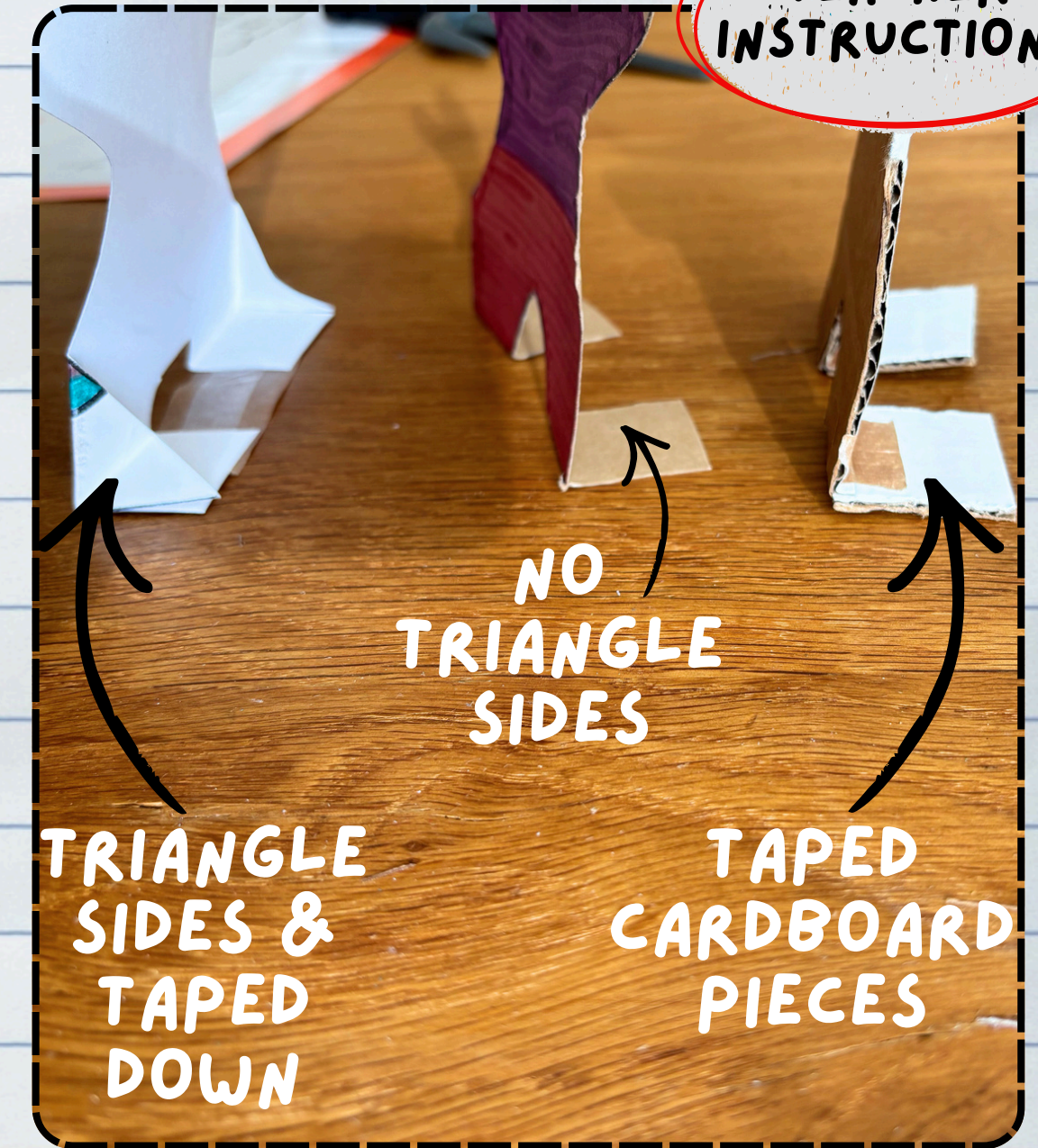




Cut out the gingerbread person. Fold the extra pieces along the dashed lines to create supports for your person to stand on. \*\*The supports may need to be taped to a table to keep the person from falling over.



If creating the person from cardboard, the cardboard may be too thick to fold. You can use a brace to tape extra cardboard to the gingerbread body.



Experiment with different ways to help the gingerbread person stand up. Leave the triangle sides or trim them off. The goal is to get the person to stand. The method does not matter.



## EXTENSION OPTIONS:

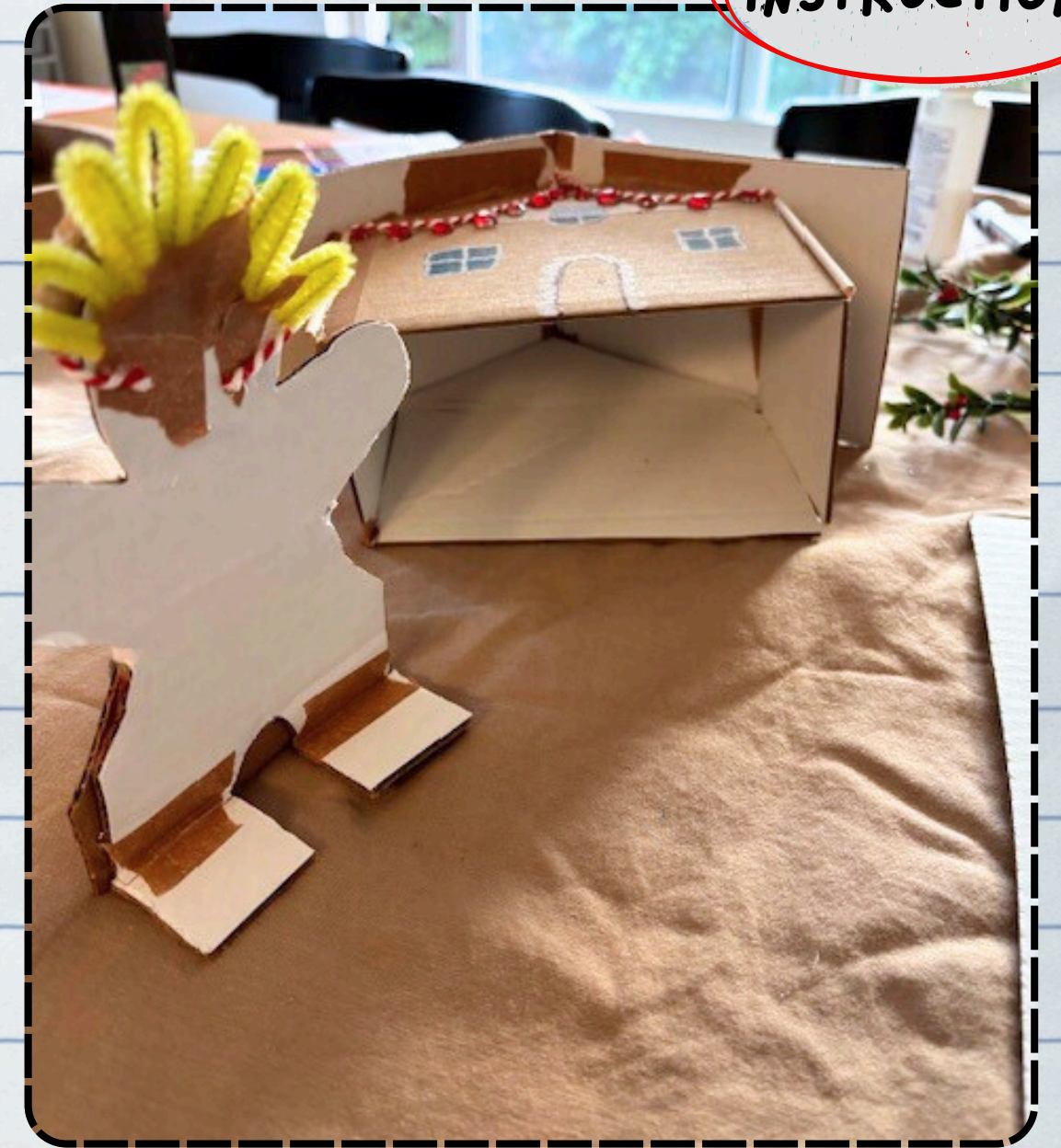
## TEACHER INSTRUCTIONS



This can be a great challenge to complete as a family at home or with buddies at school. Multiple ages work on one person together or make multiple persons.



You could also experiment with adding houses.



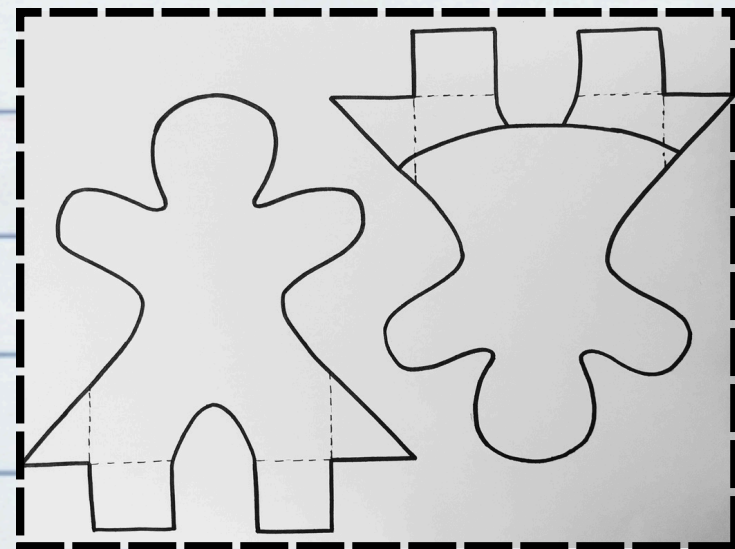
This gives an idea of interior/back construction. As always, use what is easily available.



# KIDS HAVING TROUBLE?

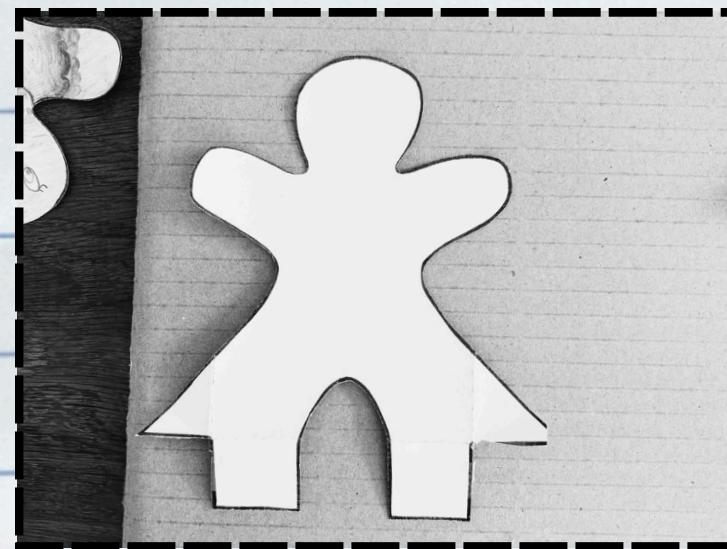
## TEACHER INSTRUCTIONS

### NO PRINTER



The template can be helpful, but is not needed. We always encourage our students that sometimes it is nice to trace and sometimes it is good to work on our freehand drawing. There is no right or wrong way to draw the person.

### PERSON KEEPS FALLING OVER



The tabs on the gingerbread person offer one option for helping him stand. Depending on the type/thickness of paper you use, the triangle tabs on the sides might be better cut off. Experiment to find the best solution. You can also put a piece of tape on the tabs to tape the gingerbread to the surface he/she is standing on.

### TOO SIMPLE?



Experiment with more than one gingerbread person! Students could make a whole family, add accessories, or add a house.